

Kenai Wetland Assessment: Recreation Function

Legend

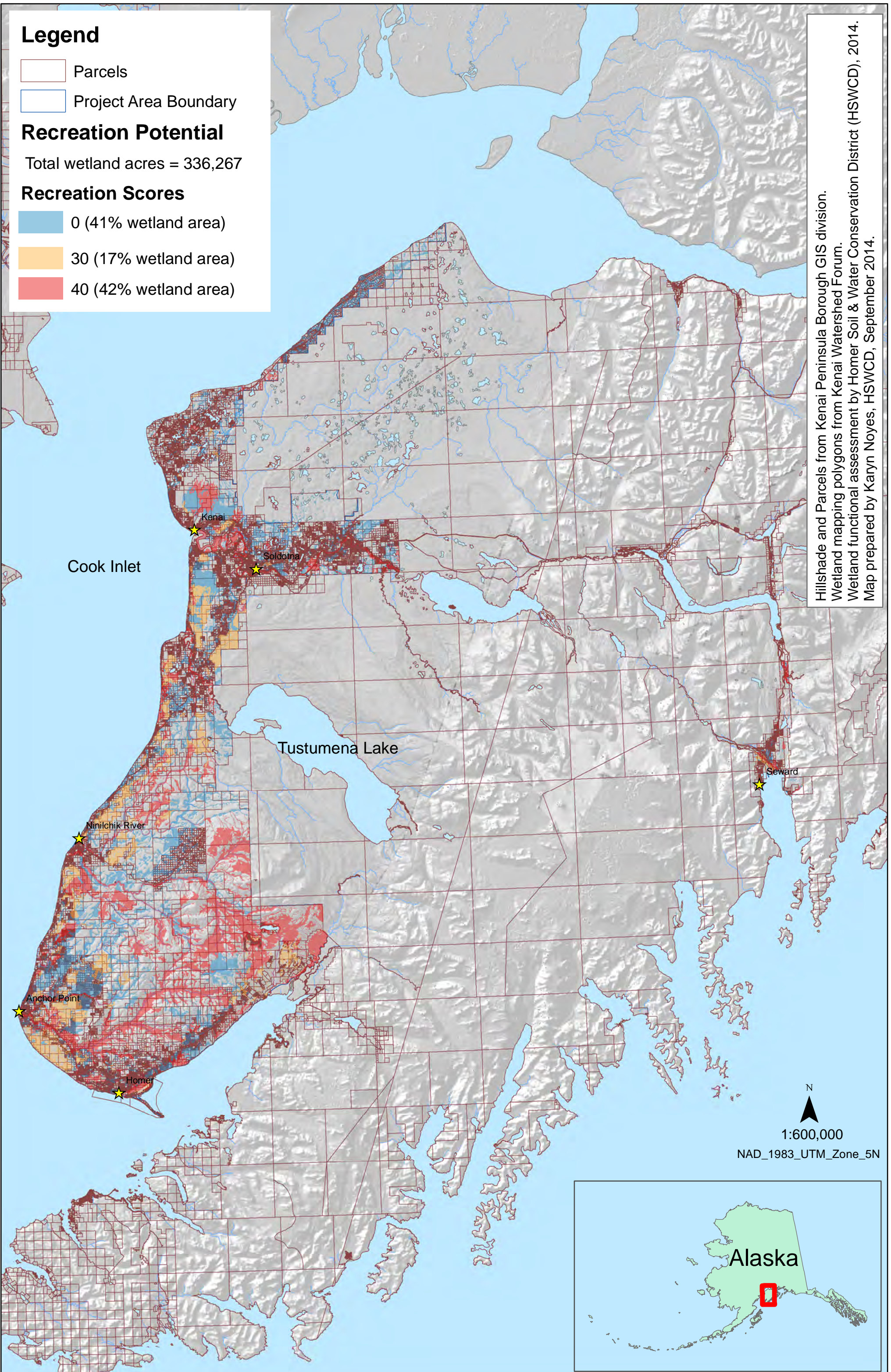
- Parcels
- Project Area Boundary

Recreation Potential

Total wetland acres = 336,267

Recreation Scores

- 0 (41% wetland area)
- 30 (17% wetland area)
- 40 (42% wetland area)



Hillshade and Parcels from Kenai Peninsula Borough GIS division.
Wetland mapping polygons from Kenai Watershed Forum.
Wetland functional assessment by Homer Soil & Water Conservation District (HSWCD), 2014.
Map prepared by Karyn Noyes, HSWCD, September 2014.